

Office to let

HBC Pallady

Bucharest, Sector 3, 47 Theodor Pallady Blvd.



Building information

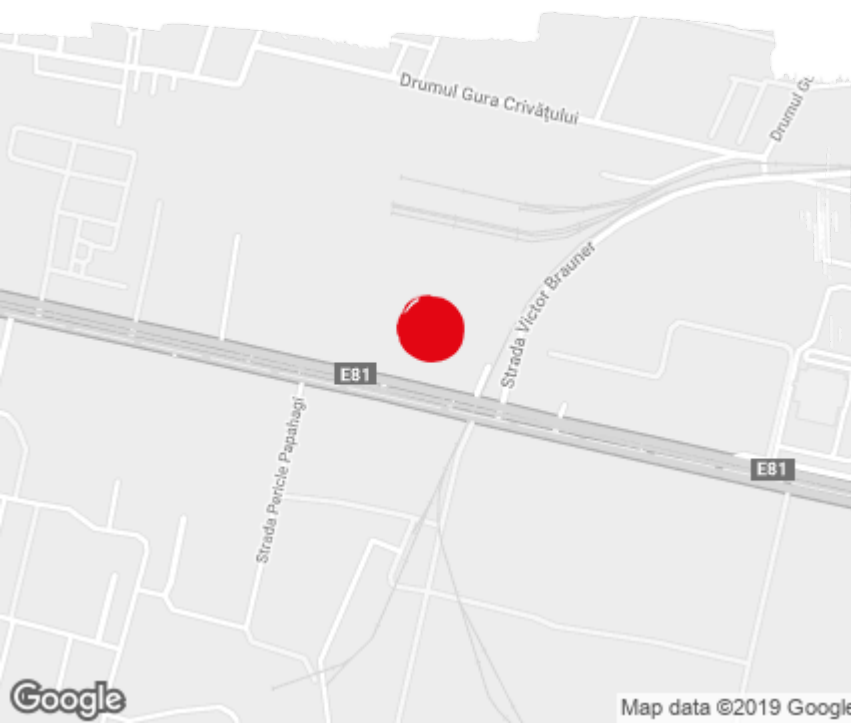
Building status	Existing
Year of construction	2014
Parking ratio	1 / 70 sq m
Total building area	8 000 sq m

Commercial terms

Office space*	after login *
Parking	after login *
Service charge*	after login *
Minimum lease term	after login *
Availability	after login *

* Asking terms for m²/month

Location



Available space

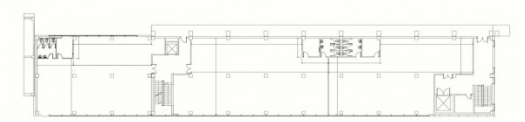
3 230 sq m

Available office space

223 sq m

Minimum office space

Typical floor plan



Available space

Floor	Vacant space	Availability
0	please contact us *	please contact us *
1	please contact us *	please contact us *
1	please contact us *	please contact us *
2	please contact us *	please contact us *
Total	after login *	

Public transport

Metro: M3
Tram: 19, 27, 40

Contact

+40 21 302 3400
More information